

The new PG-100 Fluid Bed System coats, dries, and agglomerates particulates for the food and pharmaceutical industries.



The PG 100 Fluid Bed System

ACT PG-100 Fluid Bed System

The PG-100 is the newest addition to ACT's outstanding fluid bed product line. Designed specifically for the pharmaceutical industry, the PG-100 is capable of granulation, coating, and drying particulates in the same unit. The system is easily disassembled for cleaning and sterilization to conform with cGMP standards.

Fluid Bed Standard Features:

- 304 Stainless steel construction
 - external surfaces with mill finish
 - internal surfaces with mirror finish
- Product bowl automatically tilts, which discharges material from the bowl
- External motors seal lower plenum, product bowl, and expansion zone
- Perforated fluidization plate with retention screen
- Exhaust filters; top load pleated cartridge filters
- Back pulse system for cleaning cartridge filters
- Operating temperature (ambient to 120°C)
- Platform mounted for easy moving and setup utilizing standard fork truck



PG-100 in operation



Product bowl swinging out



Automated Tilt/Drop Bowl

Fluid Bed Custom Features:

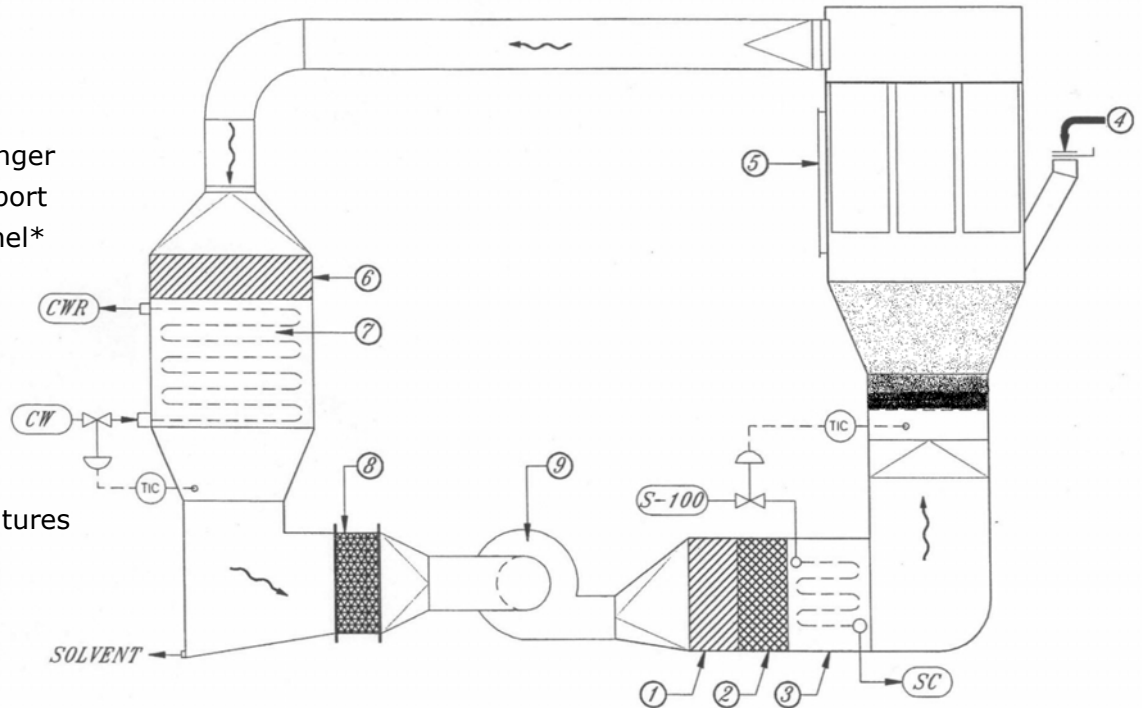
- 316 stainless steel construction
- Explosion vent panel
- Sample thief
- Product charge port
- Sanitary light on expansion zone
- Fluidization plates
- Wash in place
- Adjustable top spray assembly
- Adjustable bottom spray assembly with Draft "Wurster" Tube
- Isolation valves on inlet and outlet ductwork
- Clean in place
- Total remote operation of bowl position

PG-100 Air System

Features:

1. Prefilter
2. HEPA filter
3. Steam heat exchanger
4. Material charging port
5. Explosion vent panel*
6. Exhaust filter*
7. Condenser coil*
8. Mist Eliminator*
9. Blower

* Optional Features



PG-100 Instrumentation and Controls



Standard Features:

- Allen Bradley DeviceNet System
- Temperature controller for heat exchange
- Blower controller for adjusting airflow
- Product bowl position controller
- Product temperature display
- Exiting air temperature display
- Backpulse filter timer
- Pressure drop indicators
- Airflow indicators



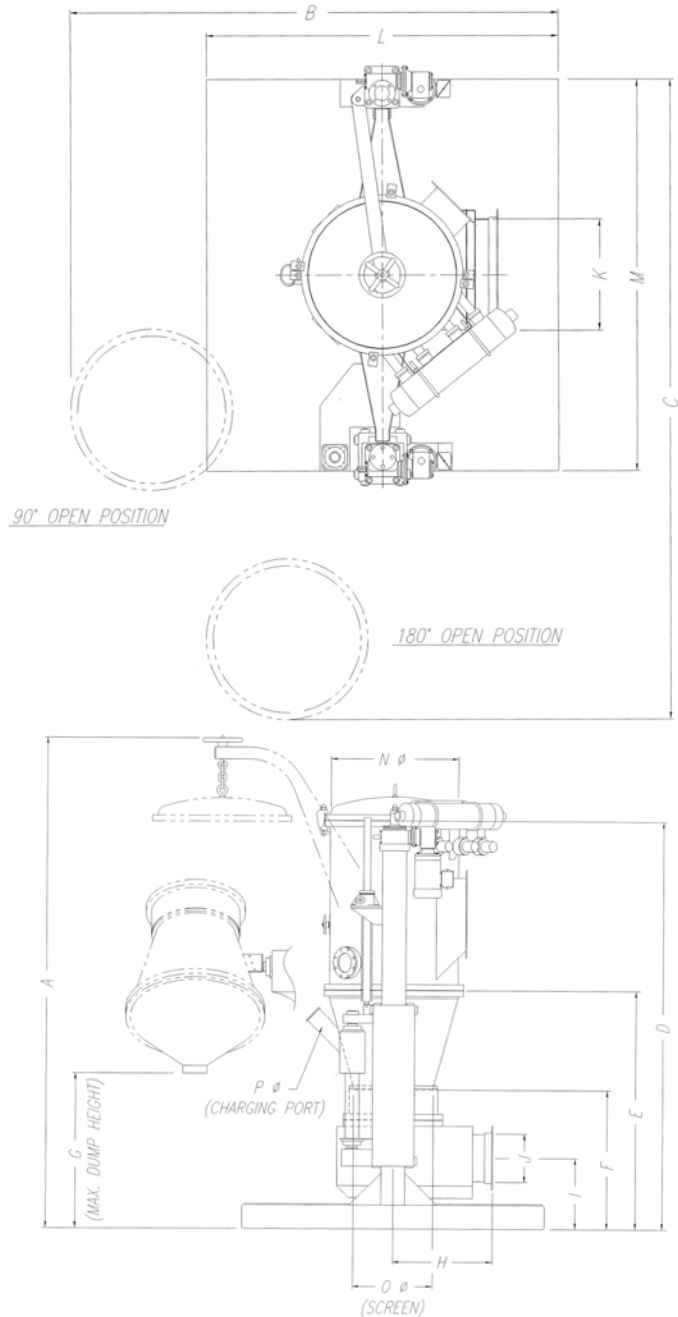
Optional Features:

- Touch screen panel
- Batch report system
 - Inlet air temperature
 - Product temperature
 - Airflow rate
 - Spray rate
 - Batch time
 - etc.
- Inerting system with oxygen concentration controller and alarm
- Temperature controller for condenser
- Humidity indicators
- Total remote operation

PG-100 System Dimensions and Technical Specifications (Standard Model)

MODEL NUMBER	PG-100
OPER. BOWL CAPACITY	100
MAX. BOWL CAPACITY	180
DIMENSION "A"	3150
DIMENSION "B"	2680
DIMENSION "C"	3540
DIMENSION "D"	2610
DIMENSION "E"	1530
DIMENSION "F"	889
DIMENSION "G"	1000
DIMENSION "H"	660
DIMENSION "I"	460
DIMENSION "J"	300
DIMENSION "K"	610
DIMENSION "L"	1930
DIMENSION "M"	2170
DIMENSION "N"	810
DIMENSION "O"	510
DIMENSION "P"	100

Operating capacity is based on 300-mm bed
 Bowl Capacity is shown in liters
 Dimensions are shown in millimeters
 * Other sizes available



Information

A free demonstration for clients is available at ACT's facility. To discuss your project with an engineer or for more information about ACT services, including complete catalogs of ACT fluid beds and other process equipment, you may contact us by phone, fax, or email.

Applied Chemical Technology

4350 Helton Drive
 Florence, AL 35630

Phone: 256-760-9600

Fax: 256-760-9638

Toll Free: 1-800 ACT-3217

Email: act@appliedchemical.com

Web site: <http://www.appliedchemical.com>